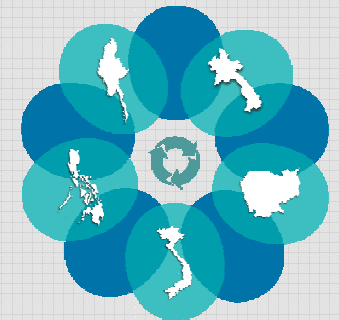


Steering Committee 15-16 January 2019 - Hanoi

# Organization of the operational field study on Leptospirosis

**Zeyar Lwin**

National Coordinator



**ECOMORE II**



**WP MYANMAR**

# Presentation Overview

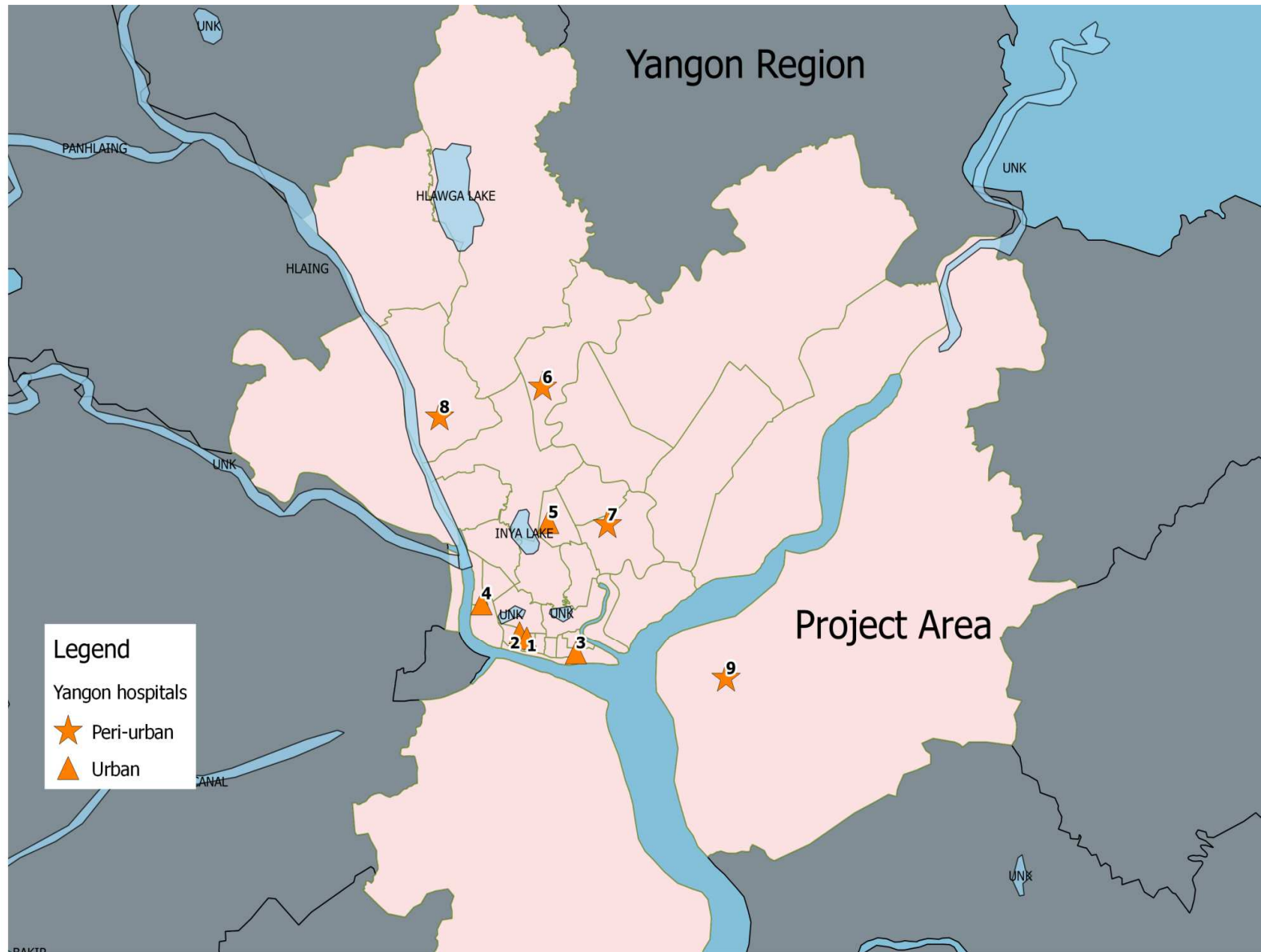
1. General overview of WP-Myanmar
2. Timeline
3. Work Flow
4. Pilot phase
5. Future plan

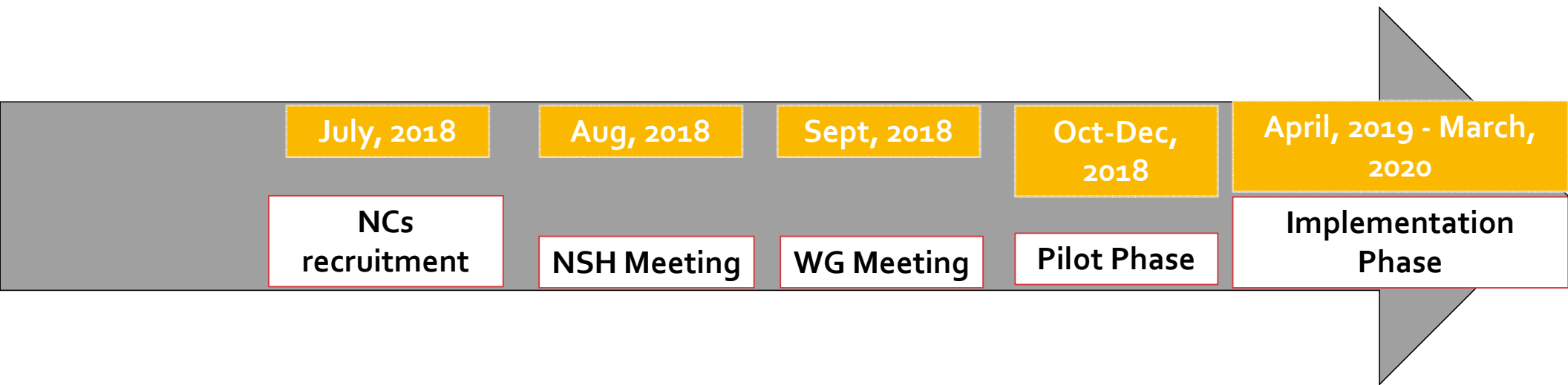
# 1. General overview of WP-Myanmar

## Multicenter hospital based case-control study on Leptospirosis

- Project area- Yangon Municipal Area
- 9 Government Hospitals
- Identify determinants for leptospirosis in **urban** and **peri-urban** area of Yangon region.
- PCR and ELISA blood test are performed at National Health Laboratory (NHL)

# 9 Hospitals

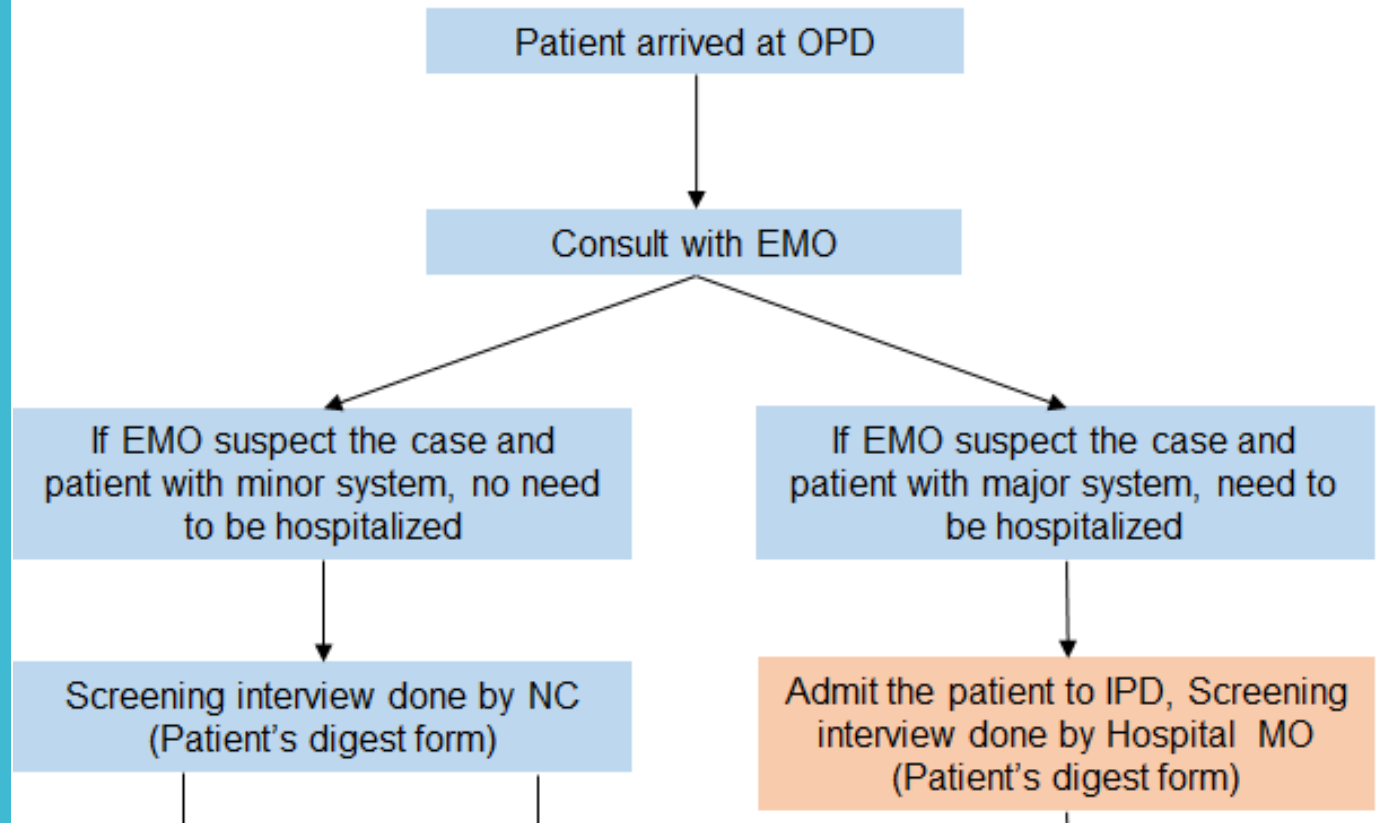




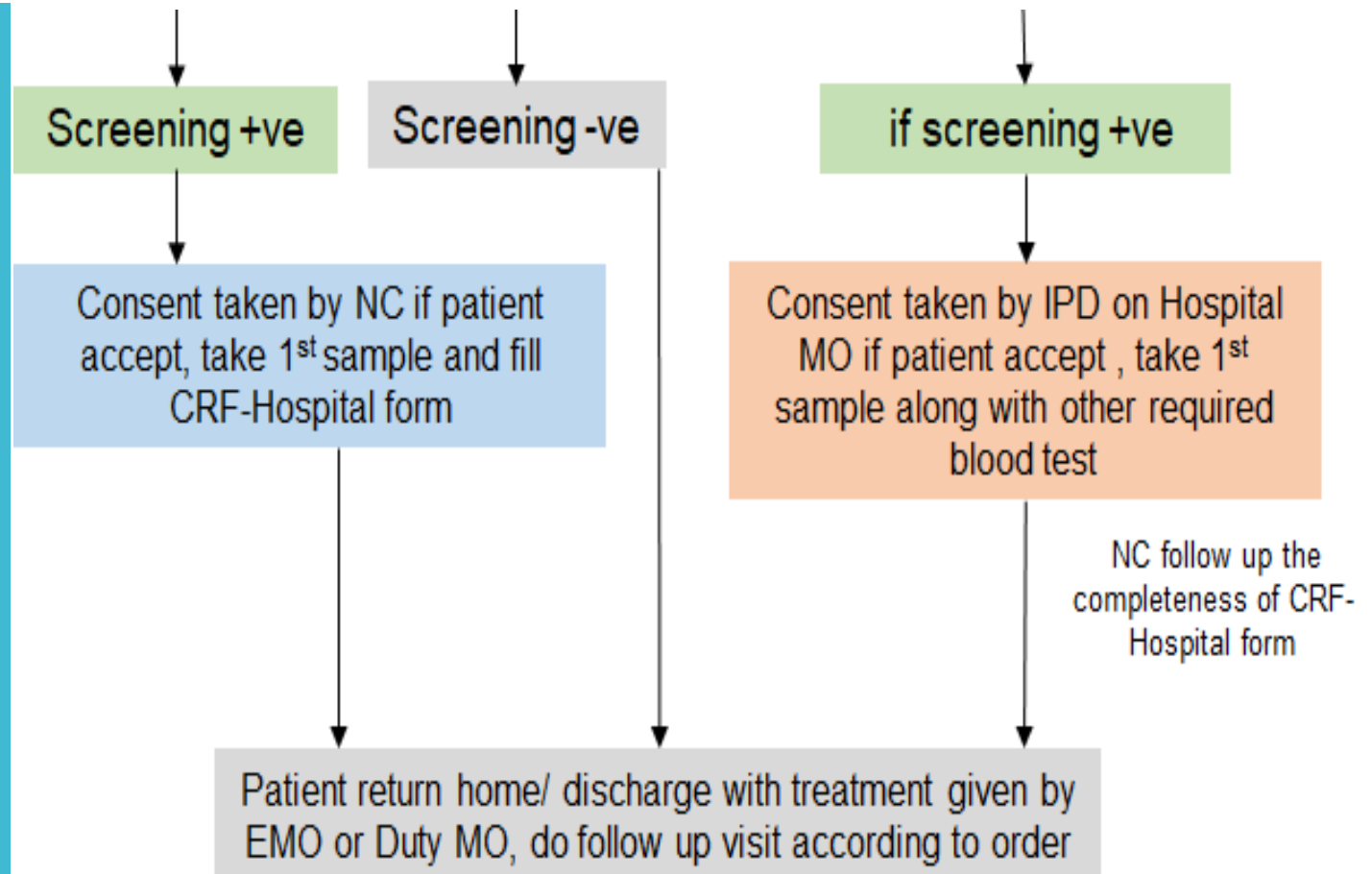
## 2. Timeline

# 3. Work Flow

## Data and sample flow



### 3. Work Flow



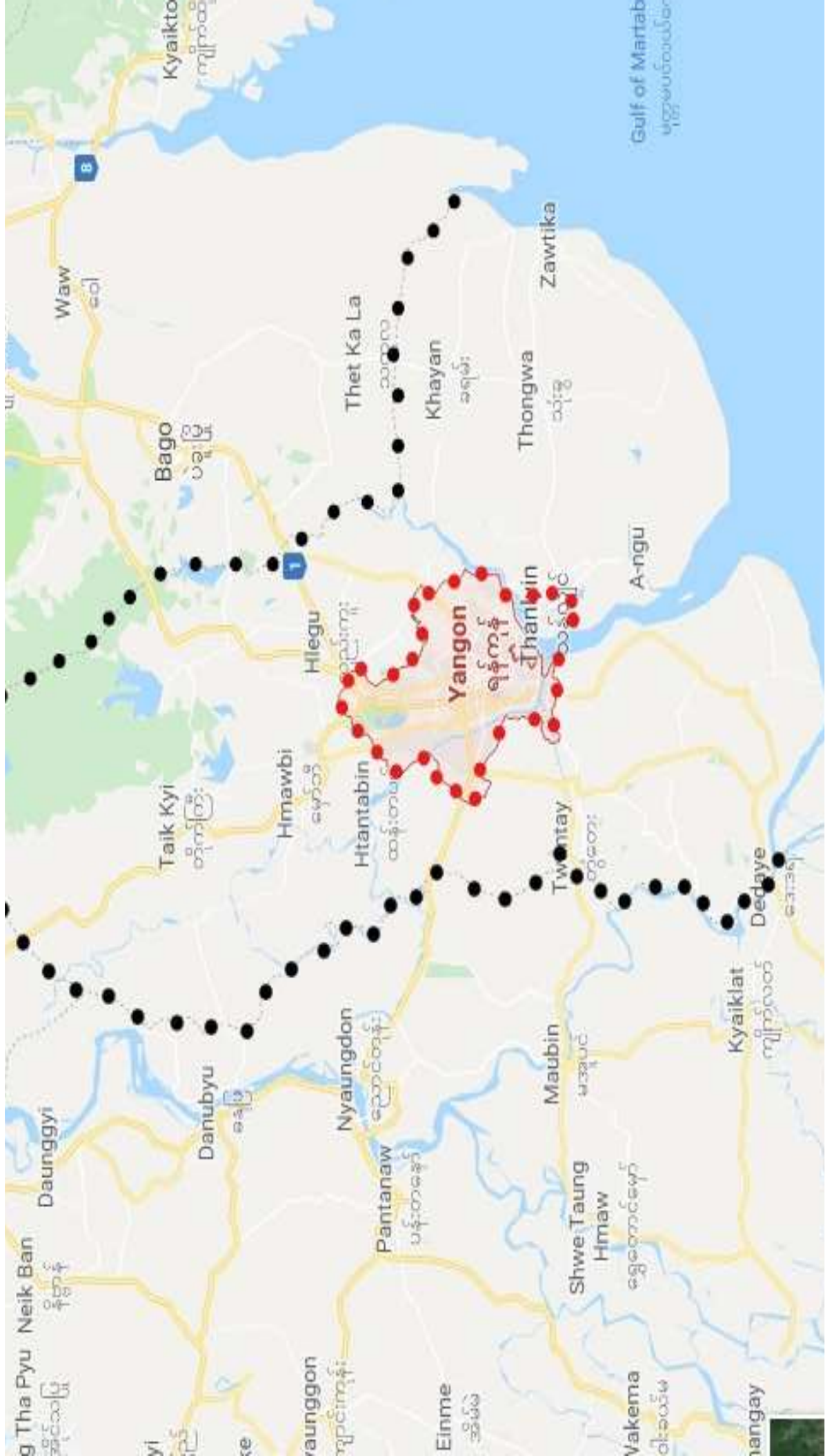
## 4. Pilot phase

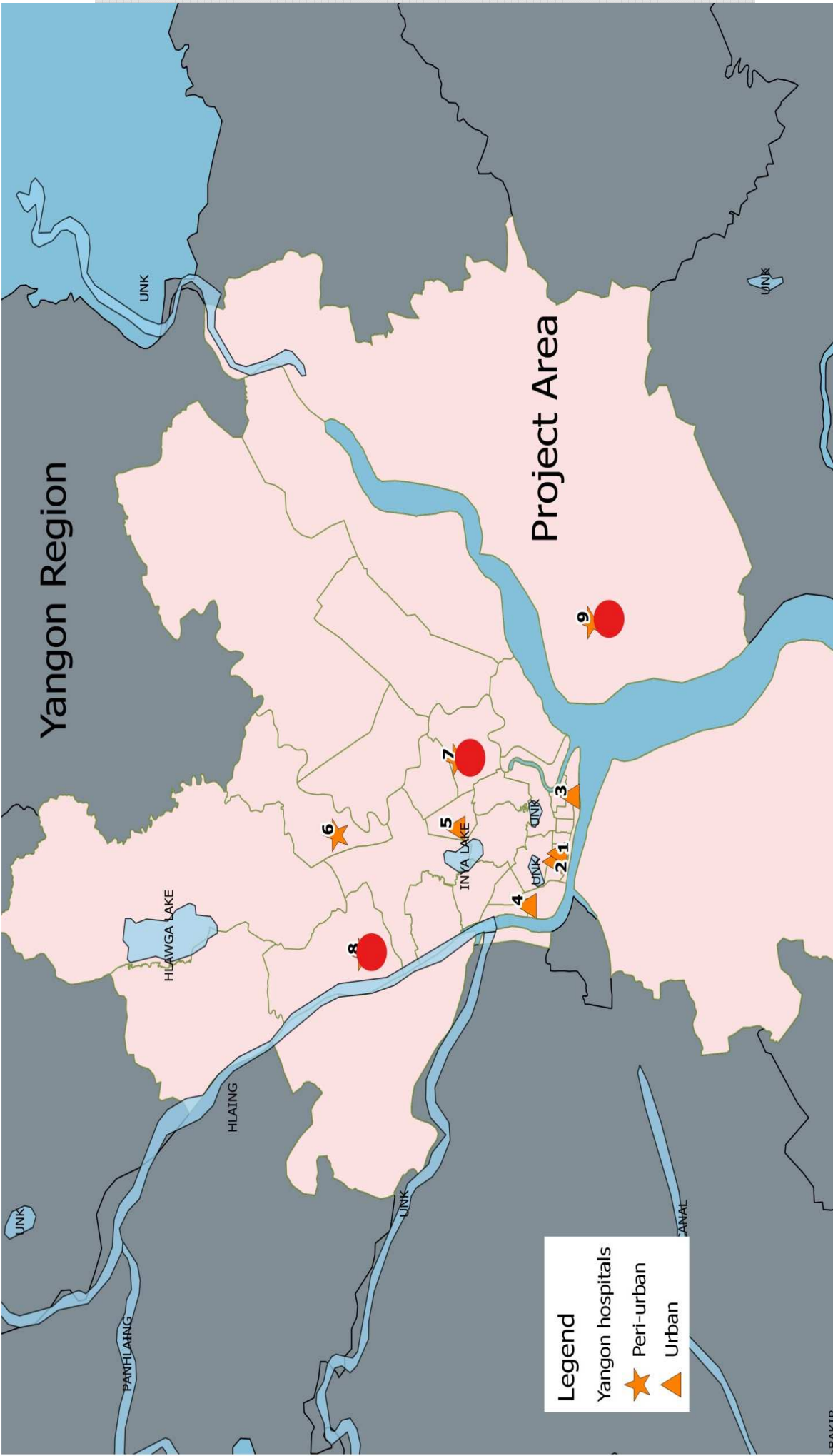
- Screening at Out-patient department (OPD)
- Screening at In-patient department (IPD)
- Household visit



## Difference between proposed and actual pilot plan

	Proposed Plan	Actual Condition
Project Area	Yangon Region	Yangon Municipal Area (33 tsp.)
Case collector	Doctors, Nurses from Hospitals	3 National Coordinators
Pilot Hospitals	All 9 Hospitals (OPD+IPD)	3 Hospitals (OPD+IPD) and 6 Hospitals (IPD only)
Inclusion criteria	Modified Faine's Criteria	Adaptation of inclusion criteria from NIHE





Yangon Region

Project Area

**Legend**  
Yangon hospitals  
★ Peri-urban  
▲ Urban

PANFILAING

HILAING LAKE

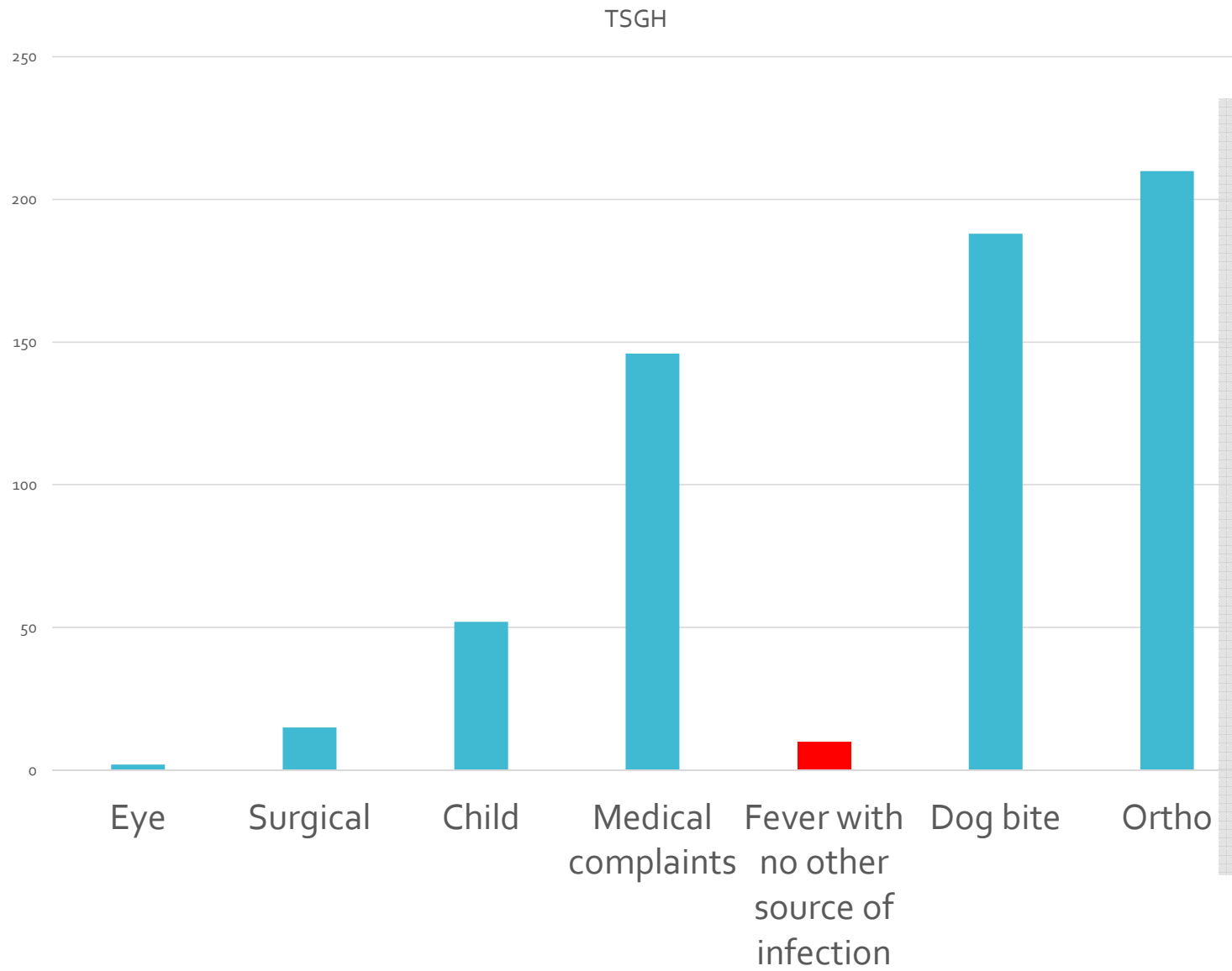
HILAING

INYA LAKE

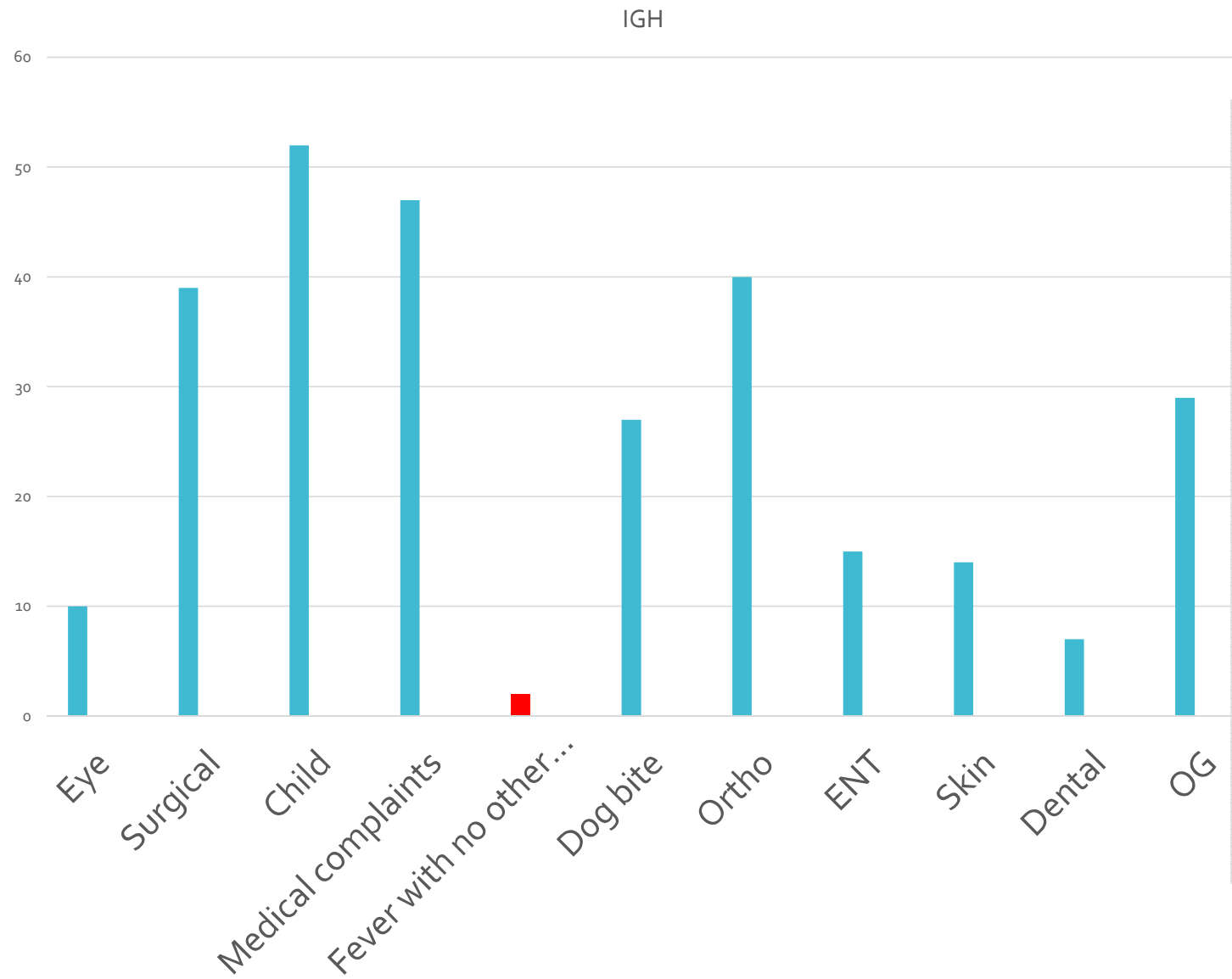
SAMAL

RAVTD

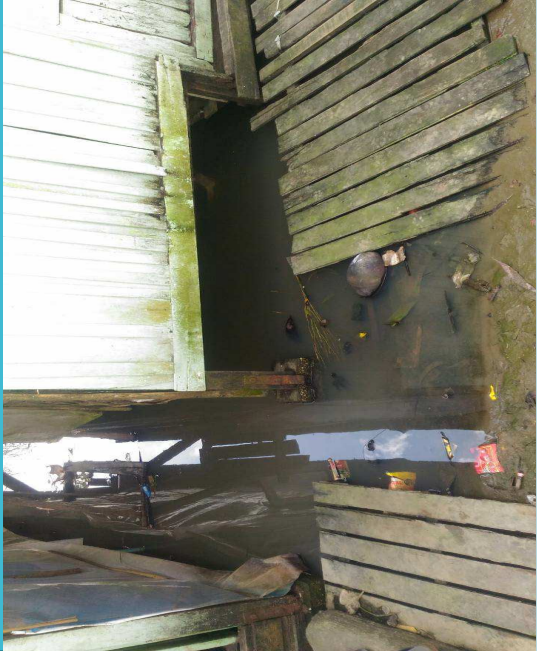
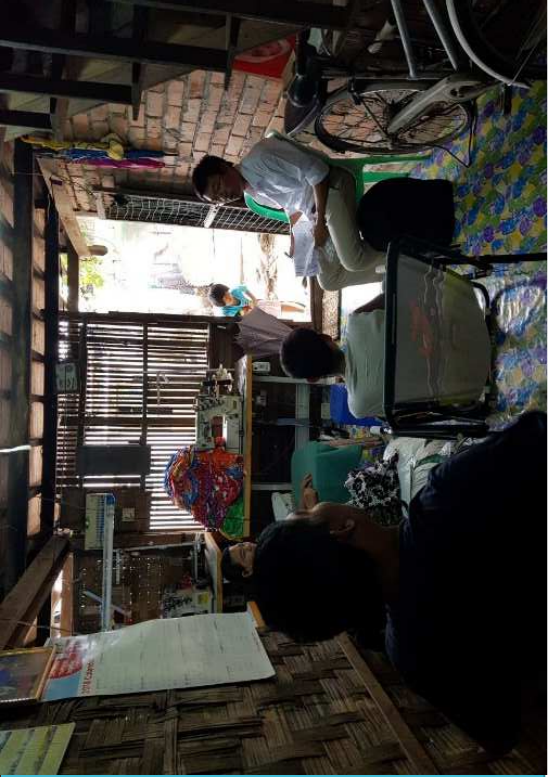
# Thingunkyun Sanpya General Hospital



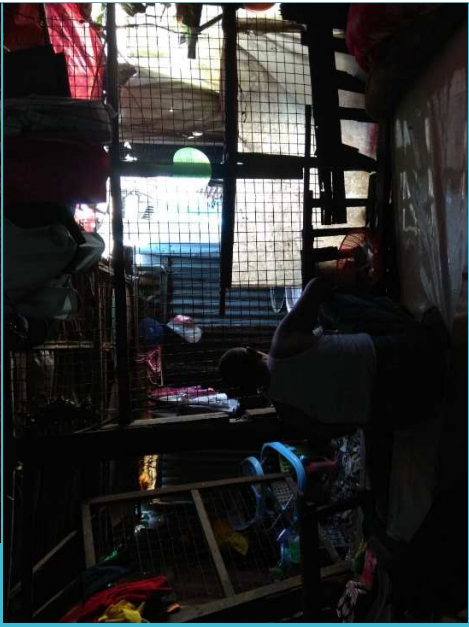
# Insein General Hospital







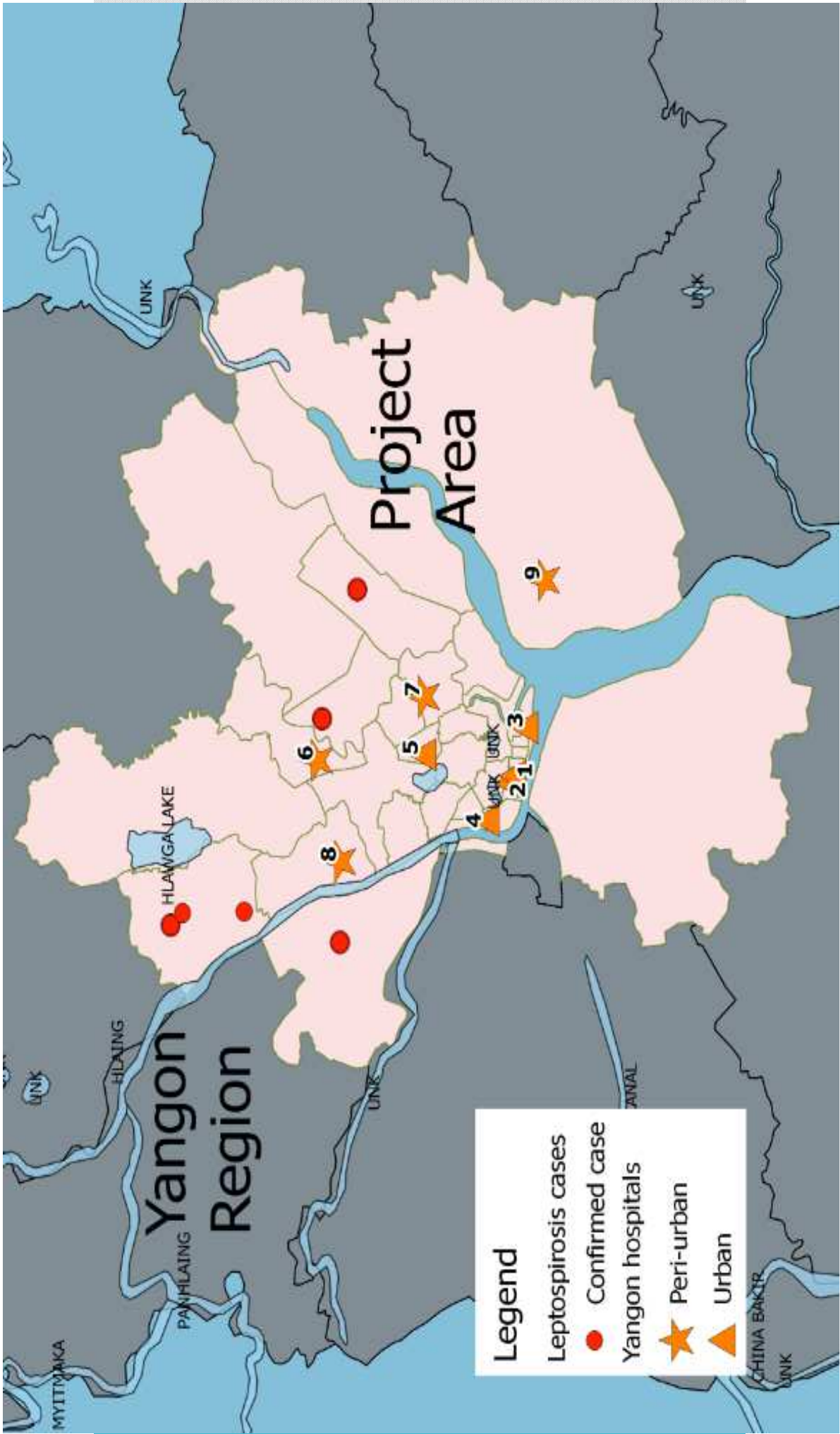




## 5. Future Plan

- Need to revise the forms to be brief, simple and easy to fill
- Plan to do hospital level advocacy meetings for each hospitals
- Plan to add two more hospitals which are located in the townships where we got the confirmed cases





**Thank you for your attention...**